

OMEGA

30
years
of
awakening
the
best
in
the
human
spirit

Annual Report
2007

Dear Friends:

In 2007, Omega celebrated its 30th anniversary. Founded in 1977, Omega has grown from an idea into the nation's most trusted source for wellness and personal growth. As a nonprofit organization, Omega offers diverse and innovative educational experiences that inspire an integrated approach to personal and social change.

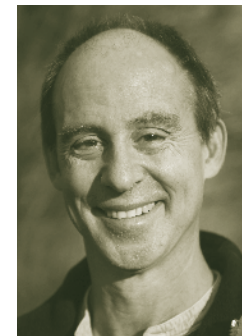
Last year, we found the world hungry for—and in need of—meaningful ways to improve their own lives, the lives of others, and the well-being of the precious planet we all share. We all want to be happy. We all want to have hope. We all want to bring genuine healing—physical, emotional, and spiritual—into our lives. And we all want a world that is peaceful and environmentally healthy for ourselves and the generations yet to come.

Over the years, Omega has played a small but important role in this monumental task. In 2007, a total of 23,520 people attended Omega programs on the Rhinebeck, New York campus and elsewhere. This makes 2007 our best year ever—not only in terms of program enrollment but also in terms of giving all of us who work here a sense that we are fulfilling our mission of bringing hope and healing into a world that needs it more than ever.

One of the most significant events of 2007 was the groundbreaking of the Omega Center for Sustainable Living and the launching of our Campaign for Sustainable Living. The center offers a revolutionary way to process our wastewater and turn it into water pure enough to water our gardens and grounds. While this is a huge step for Omega, it is only a small part of our larger vision to show people, by our example, how to tread more lightly on the earth.

To this end, in 2007 we made major advances in our efforts to “buy local” and to purchase from companies that grow and manufacture their goods using sustainable practices. We are not simply looking for the greenest option; we are also probing into the entire production process of the many things we purchase, from the wood we use in our repair and construction projects, to the food we serve our participants and staff. How is it produced? What is the trail of the raw materials? What are the working conditions for those involved? In this way Omega—and all of us—can help change common agricultural and business practices in a very real way: by using our purchasing power to cast a vote for sustainability.

We hope you continue to partner with us in changing the world, one person at a time, realizing that such change begins with each and every one of us.



Stephan Rechtschaffen, M.D.



Skip Backus

Stephan Rechtschaffen, M.D.
Board Chairperson

Skip Backus
Executive Director

Omega Institute for Holistic Studies, Inc.

150 Lake Drive • Rhinebeck, New York 12572

eOmega.org • 845.266.4444

Omega Institute is a 501(c)(3) nonprofit organization

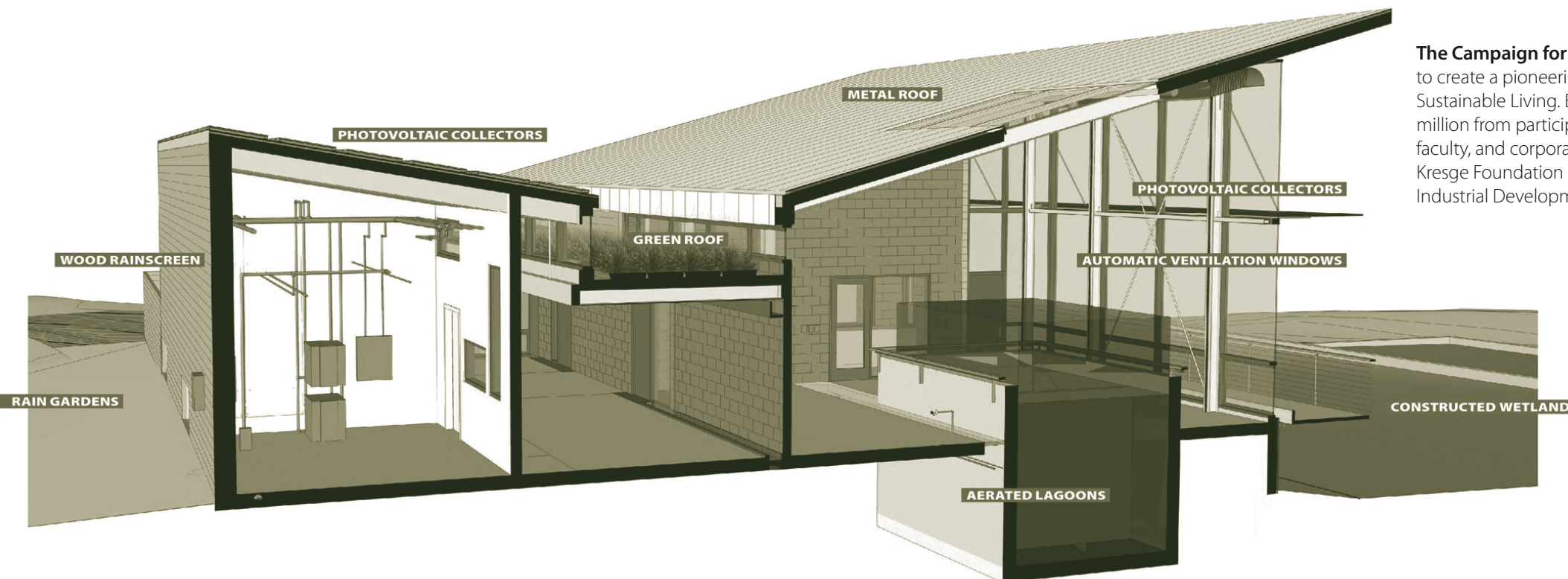
Please share this report with others.

© 2008 Omega Institute

In 2007, we broke ground on the Omega Center for Sustainable Living (OCSL), a pioneering 6,500 square-foot education center that will utilize ecological wisdom and innovative technology to model ways we can live more lightly on the Earth. The OCSL will teach about our interdependence, and inspire visitors to join a growing global network of people taking action to heal our planet.

At the world's premiere green building conference last November in Chicago, Greenbuild 2007, Omega was awarded the Living Building Competition's On the Boards Award. This award acknowledges a project in design or under construction most likely to meet Living Building performance criteria.

The OCSL is expected to be the first certified "Living Building" in the world. A Living Building is not just self-sustaining and "off the grid" in terms of water and energy usage; it also raises the bar in green building by using the best and most comprehensive sustainable building practices available.



The Campaign for Sustainable Living is a \$2.8 million capital campaign to create a pioneering education center, the Omega Center for Sustainable Living. By the end of 2007, we had raised more than \$1 million from participants, foundations, governmental agencies, staff, faculty, and corporations, including a \$77,000 planning grant from the Kresge Foundation and a \$100,000 grant from the Dutchess County Industrial Development Authority.



At the October 2007 OCSL groundbreaking are (from left to right):

Eco Machine™ developer
John Todd

Scenic Hudson president
Ned Sullivan

New York's former First Lady
Silda Wall Spitzer

Omega executive director
Skip Backus

Omega cofounder
Elizabeth Lesser

Omega cofounder
Stephan Rechtschaffen

Kenneth Little Hawk
who blessed the site



Pema Chödrön



In 2007, Omega's stellar faculty and innovative programming helped us break all previous attendance records. More than 23,000 people came to learn at all of Omega's venues, more than 16,000 of those at our Rhinebeck campus.

Pema Chödrön, one of the nation's preeminent Buddhist teachers, returned to Omega for a three-day Memorial Day Weekend retreat on May 25–28 called Practicing Peace in Times of War. It was her seventh visit to the campus. "The spiritual journey is not a battle between good and evil, but between what we want and don't want," she told a sold out gathering of 550 people.

Former Vice President **Al Gore** praised the Omega Center for Sustainable Living during his keynote speech at Being Fearless, our annual spring conference in New York City. The April 13-15 event drew more than 1,700 participants. Gore would later go on to receive the 2007 Nobel Peace Prize for his efforts to call attention to the issue of climate change. Additional keynote addresses at Being Fearless were given by **Jane Goodall**, **Nora Ephron**, **Arianna Huffington**, and **Caroline Myss**.

Omega welcomed a full house of 2,675 people to the Beacon Theater in New York City to experience the teachings of **Eckhart Tolle**, one of the great spiritual masters of our time. Tolle's latest best-seller, *A New Earth: Awakening to Your Life's Purpose*, has become an online sensation with more than 5 million "webinar" participants. In a pair of talks given on October 19 and 20, Tolle explored, with humor and wit, the concepts of presence, time, the mind, and freedom, urging us to move beyond judging, defining, and projecting, into "a relationship with the present moment that is friendly."



Jane Goodall



Nora Ephron



Arianna Huffington



Caroline Myss



Eckhart Tolle



Betty Williams

In October, **John of God (Medium João)** came from his home and sanctuary, Casa de Dom Inacio, in Brazil to Omega, drawing more people to our Rhinebeck campus than ever before for one single event. Over four days October 1-4, a total of 2,665 participants from around the world found themselves in the presence of one of the most revered spiritual healers and mediums of today. Dressed in white, they gathered in a large tent set up next to the Main Hall. Some say John of God cures disease; others say that while a physical cure was not achieved, a spiritual and emotional healing was the gift that emerged.

Omega's Women, Power & Peace conference, September 14-16, drew an extraordinary roster of speakers from around the world, including Nobel Peace Prize winners **Betty Williams** (1977 winner from Ireland), **Rigoberta Menchú Tum** (1992 winner from Guatemala), and **Jody Williams** (1997 winner from the United States). Additional speakers included **Eve Ensler, Jane Fonda, Sally Field, Raine Eisler,** and **Carol Gilligan**. Singer and songwriter **Natalie Merchant** opened the conference with a moving performance of some of her best-loved songs. Nearly 600 participants attended the conference presented by The Women's Institute at Omega, dedicated to cultivating women's wisdom and developing a new power paradigm that honors the regenerative, cooperative, and healing qualities of the feminine.

The number of children diagnosed with autism continues to climb at an alarming rate. This troubling disorder now affects 1 in every 150 children. Omega's first annual Autism Through the Life Span conference, August 17-19, brought together over 120 professionals and family members of people with autism and Asperger's Syndrome. Together they learned from innovators in the field the latest approaches to diagnosing, treating, and living with autism. Hosted by **Valerie Paradiz**, the faculty included **Temple Grandin, Theresa Hamlin,** and **Stephen Shore**.



Rigoberta Menchú Tum



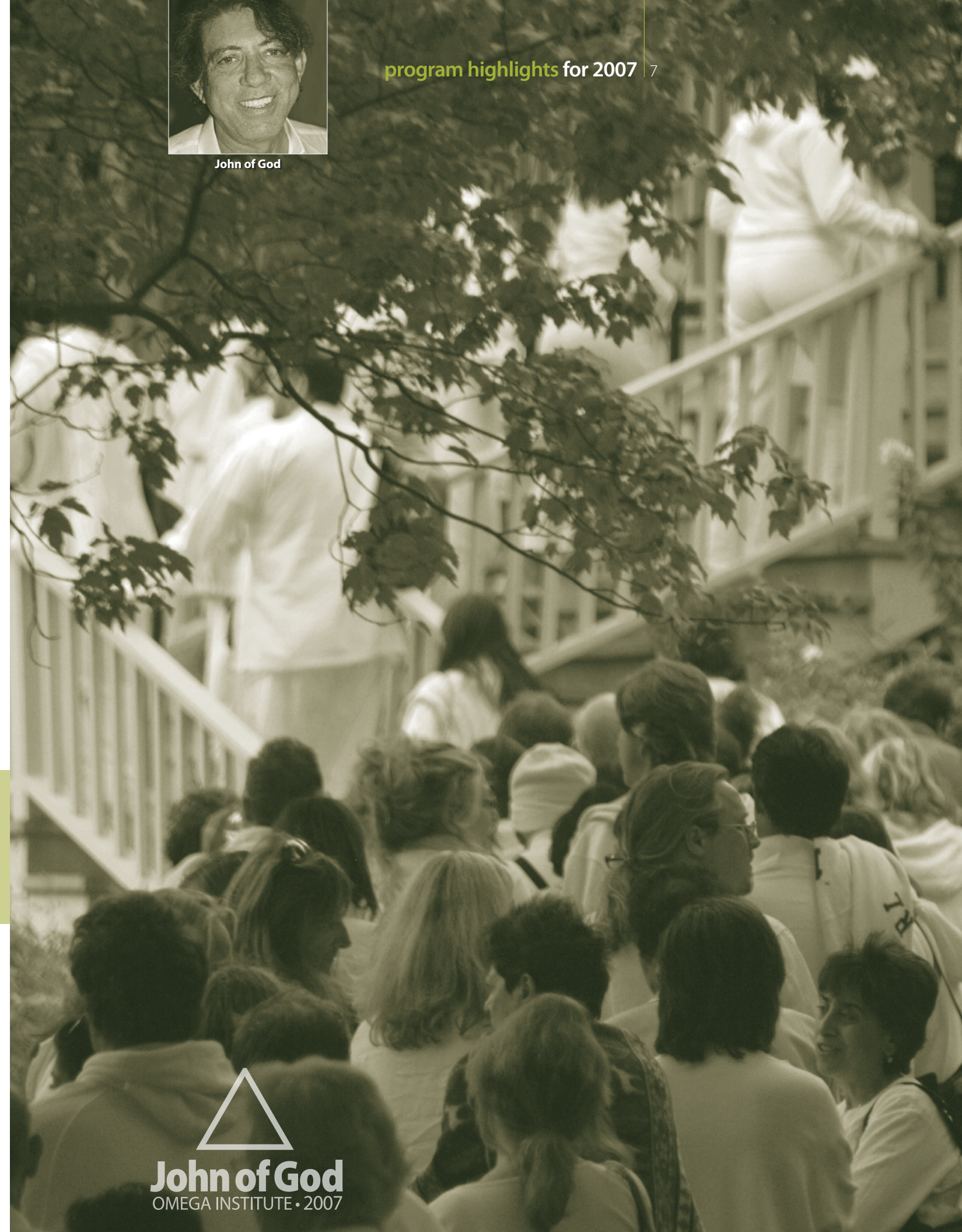
Jodi Williams



Temple Grandin



John of God



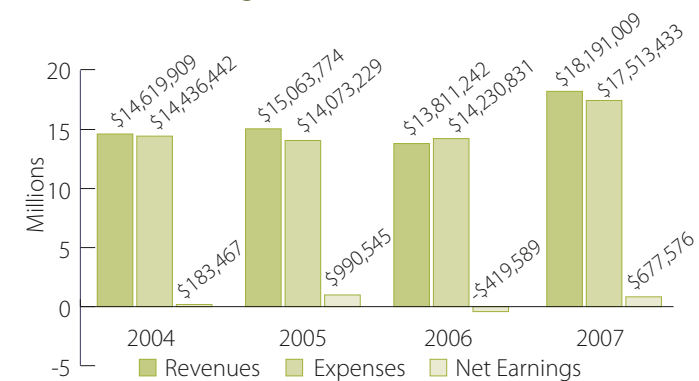
balance sheet

ASSETS	2007 Totals	2006 Totals
Current Assets		
Cash and Cash Equivalents	\$633,494	\$558,586
Marketable Securities (Cost)	\$238	\$238
Loans Receivable	\$7,148	\$7,706
Donations Receivable	\$0	\$0
Accounts Receivable	\$25,208	\$9,772
Inventories	\$291,274	\$251,895
Prepaid Expenses	\$92,214	\$51,480
Investment in Art	\$7,296	\$7,296
Deferred Program Costs	\$785,097	\$844,470
Total Current Assets	\$1,826,533	\$1,746,879
Property and Equipment		
Land	\$1,142,600	\$1,142,600
Buildings and Improvements	\$14,417,632	\$13,964,680
Administrative Equipment	\$1,078,573	\$1,059,820
Cafe, Camp, Store,		
Library Equipment and Books	\$1,651,078	\$1,583,638
Website Development	\$218,542	\$240,355
Campus Master Plan	\$0	\$0
Accumulated Depreciation	-\$5,509,003	-\$5,343,621
Total Property and Equipment	\$12,999,422	\$12,647,472
Total Assets	\$14,825,955	\$14,394,351
LIABILITIES AND UNRESTRICTED NET ASSETS		
Current Liabilities		
Accounts Payable	\$144,190	\$19,196
Taxes Payable	\$659	\$1,658
Deferred Program Revenue	\$1,077,250	\$1,468,246
Program Credits Outstanding	\$318,908	\$297,879
Total Current Liabilities	\$1,541,007	\$1,786,979
Non-Current Liabilities		
Note Payable	\$0	\$0
Total Liabilities	\$1,541,007	\$1,786,979
Net Assets		
Unrestricted	\$12,987,071	\$12,489,405
Restricted	\$297,877	\$117,967
Total Net Assets	\$13,284,948	\$12,607,372
Total Liabilities and Net Assets	\$14,825,955	\$14,394,351

statement of cashflows

Cash Flows Provided by Operating Activities	2007 Totals	2006 totals
Net Increase from Activities	\$677,576	-\$419,589
Adjustments to reconcile Net Increase from activities net cash provided by operating activities:		
Depreciation	\$584,969	\$556,450
Changes In:		
Inventories	-\$39,379	-\$11,385
Accounts Receivable	\$13,925	\$7,194
Donations Receivable	\$0	\$0
Prepaid Expenses	-\$40,734	\$10,740
Deferred Programs	\$59,373	-\$392,620
Notes Receivable		
Accounts Payable	\$124,994	\$5,965
Deferred program revenue	-\$390,996	\$786,073
Taxes payable	-\$999	\$871
Program Credits	\$21,029	-\$20,052
Net Cash Provided by Operating Activities	\$1,009,758	\$523,647
Cash Flows From Investing Activities		
Note Payable	\$0	\$0
Investments in Marketing Securities	\$0	\$0
Land, Building, Improvement and Equipment Purchases Net	-\$936,920	-\$454,838
Loans Receivable	\$2,069	-\$4,325
	-\$934,851	-\$459,163
Net Increase/(Decrease) in Cash	\$74,907	\$64,484
Summary		
Cash Balance at End of Period	\$633,493	\$558,586
Cash Balance at Beginning of Period	\$558,586	\$494,102
Net Increase/(Decrease) in Cash	\$74,907	\$64,484

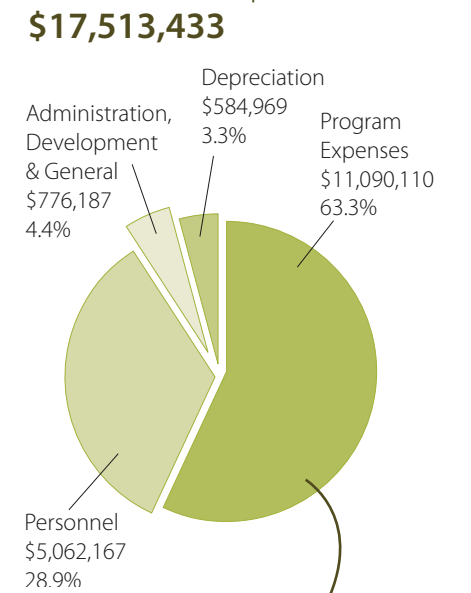
comparative revenues, expenses and net earnings



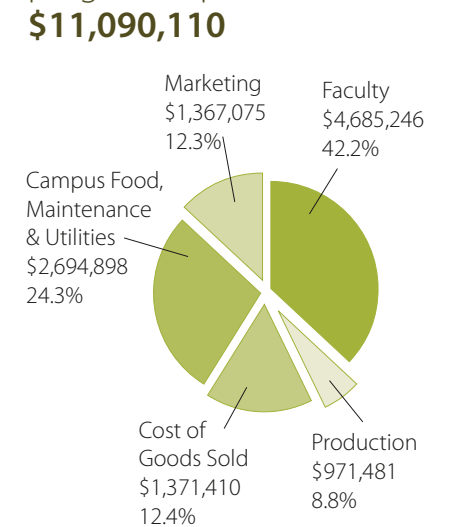
income statement

REVENUES	Unrestricted	Restricted	2007 Totals	2006 Totals
Program Revenues				
Programs and Housing	\$13,909,789	\$13,909,789	\$10,367,178	
Meals Revenue	\$32,600	\$32,600	\$21,063	
Transportation Revenue	\$28,681	\$28,681	\$22,981	
Exhibit Revenue	\$84,300	\$84,300	\$48,850	
Facility Rental Revenue	\$295,575	\$295,575	\$253,379	
Tapes Royalty Revenue	\$0	\$0	\$0	
Miscellaneous Revenue	\$511,957	\$511,957	\$279,838	
Bookstore Revenue	\$1,478,055	\$1,478,055	\$1,223,751	
Library Income	\$0	\$0	\$0	
Cafe Revenue	\$259,910	\$259,910	\$207,907	
Wellness Center Revenue	\$514,264	\$514,264	\$490,622	
Consulting Services Income	\$0	\$0	\$0	
Registration Services and Fees	\$0	\$0	\$0	
Total Program Income	\$17,115,131	\$17,115,131	\$12,915,569	
Donations Revenue				
Donations - Unrestricted	\$74,642	\$74,642	\$65,047	
Women & Power Donations	\$252,241	\$252,241	\$105,796	
Women's Institute Funding	\$201,356	\$201,356	\$0	
Capital Campaign	\$218,466	\$218,466	\$126,620	
Scholarship Fund Donations	\$100,359	\$100,359	\$59,673	
Ram Dass Library Fund Donations	\$1,885	\$1,885	\$3,859	
Other Restricted Donations	\$20,000	\$20,000	\$64,112	
Total Donations	\$74,642	\$794,307	\$868,949	\$425,107
Investment Activity				
Revenues-Investment Income	\$97,426	\$97,426	\$54,762	
Miscellaneous Activity				
Miscellaneous Income	\$109,503	\$109,503	\$415,804	
Net Assets Released from Restrictions	\$614,397	-\$614,397	\$0	\$0
Total Revenues and Other Support	\$18,011,099	\$179,910	\$18,191,009	\$13,811,242
EXPENDITURES				
Program Expenditures				
Program Faculty	\$4,685,246	\$4,685,246	\$2,981,401	
Program Production	\$971,481	\$971,481	\$514,030	
Marketing	\$1,367,075	\$1,367,075	\$1,256,908	
Kitchen Expenses	\$1,076,913	\$1,076,913	\$920,345	
Campus Expenses	\$1,617,985	\$1,617,985	\$1,332,527	
Bookstore Cost of Sales	\$895,075	\$895,075	\$705,687	
Library Purchases	\$48	\$48	\$1,024	
Media Production Costs	\$43,937	\$43,937	\$17,534	
Cafe Cost of Sales	\$153,896	\$153,896	\$126,690	
Wellness Center	\$278,454	\$278,454	\$272,958	
Total Program Expenditures	\$11,090,110	\$11,090,110	\$8,129,104	
Administrative Expenditures				
Personnel	\$5,062,167	\$5,062,167	\$4,841,938	
Administrative	\$463,462	\$463,462	\$431,260	
Development	\$102,198	\$102,198	\$60,625	
General	\$210,527	\$210,527	\$211,454	
Depreciation	\$584,969	\$584,969	\$556,450	
Total Administrative Expenditures	\$6,423,323	\$6,423,323	\$6,101,727	
Total Expenditures	\$17,513,433	\$17,513,433	\$14,230,831	
Change in Net Assets	\$497,666	\$179,910	\$677,576	-\$419,589
Net Assets Beginning of Year	\$12,911,655	\$117,967	\$12,607,372	\$13,026,961
Net Assets End of Year	\$13,409,321	\$297,877	\$13,284,948	\$12,607,372

2006 overall expenses:



program expenses:



Omega Institute for Holistic Studies, Inc. is qualified as a tax-exempt organization under Section 501(c)(3) of the Internal Revenue Code. Contributions are tax-deductible, as allowed by the law.

The Statement of Financial Position and Activities is summarized here. A complete copy of the last annual report filed with the New York State Office of the Attorney General may be obtained upon request by writing to the:

New York State Office of the Attorney General
Charities Bureau
120 Broadway
New York, NY 10271

Our donors know how special Omega has been in their own lives and understand the life-changing potential it holds for others. Their gifts provide Omega with vital resources. Contributions from participants have enriched our scholarship fund and enabled Omega to enhance the experience of guests, faculty, and staff through campus building projects like the Sanctuary, the Hermitage, the Yearning Pond, the Ram Dass Library, and our current project—the Omega Center for Sustainable Living.

Omega would like to thank our many supporters. Without you, these important projects might be left undone. On these pages, we recognize the contributions of those who made cumulative gifts of \$35 or more received between January 1 and December 31, 2007.



**VISIONARY
\$5,000 plus**

Alcoa Foundation
Kathryn Barber
Frederick & Greta Smiley Charitable Foundation, Inc./Henry C. & Phyllis Beinstein
The Dietrich Foundation, Inc./Daniel Dietrich
The Dyson Foundation
James J. Gallagher Family Legacy of the Community Foundation of New Jersey/
James J. Gallagher
Patty Goodwin
Gail M. Gross
Tom F. & Betsy W. Kearns
Gary & Marian Krauthamer
The Kresge Foundation
Landine L. Manigault
Friedrike Merck
Alex G. Nason Foundation, Inc./Alex G. Nason
David E. & Candy Orlinsky
Peace Love and Joy Inc.
Sarah Peter
The Harvey & Phyllis Sandler Foundation, Inc./Harvey & Phyllis Sandler
United Breast Cancer Foundation
Anonymous (2)

**BENEFACTOR
\$2,500 - \$4,999**

Shelby Broughton & Nada Conway
Eileen Fisher Foundation/
Eileen Fisher
Karen Fitzgerald
Roy A. Hunt Foundation/
Terry Hunt
Eric Katzman & Melissa Elstein
Elizabeth Lesser
Marshall & Sterling Inc.
Renee Martin Nagle
NOK Foundation
Mary Calder Rower
Satya Foundation Inc./Satya
Nina M. Westphal

**PATRON
\$1,000 - \$2,499**

Stacia D. Abel
Altman-Stiller Foundation/
Robert & Christine Stiller
Hangley Aronchick Segal & Pudlin/
Mark & Judy Aronchick
Jacalyn E. Bennett
Howard Binkow
Joan S. Blaine
Dawn Clark
ABC Foundation/
John T. Compton
Richard and Kathleen Conroy
Ruth Eng
Elizabeth J. Frautschi
Health Quest Systems Inc./
Carla Goldstein
George W. & Helen Kaufman
Sandra A. Lamb
Bill LeBoeuf M.D. & Sarah Fernsler M.D.
Walter Link
Walter C. Mickleburgh
C. Keith & Amy Mithoefer
Melissa Motz
Stephan Rechtschaffen
Nancy D. Rubbico
Anne-Katrin & Linda Spiess
Dr. L.J. Wahl
Hartley D. Webster
Charitable Fund/
Hartley and Benson
Webster
Williams Lumber/
Don & Sandy Williams
Anonymous (1)

**PARTNER
\$500 - \$999**

Barbara Aaron in honor of the Red Tent Goddesses
Cynthia Kia Abilay
Susan P. & Bruce A. Anderson
Samba Ba
Andrea Billhardt
Samuel H. Blumberg & Elizabeth A. Hembree
Kathryn K. Brown

Connie P. Cohen
Christopher & Hillary Davis in honor of Baby Tess
David DeRose
Hugh Evans
Amy S. Ferris
Joel Fried
Anthony L. Garrett in honor of George Kaufman
Peggy V. Hawkins
Charlton C. Hughes
Henry & Elaine Koelme
Joel & Melanie Levitan
Caroline Levy & Leonard Kady
The John C. Hover Foundation, Inc./
Margo H. Lundell
Eileen Lynch
Fidelity Charitable Gift Fund/
Richard A. Madlener
Judy Minor
Irene Naorlevich
George Philip & Monique Schobert
Joe M. Phillips & Barbara Wingate
M. Trika Smith-Burke
Stewart's Shops
Tom & Grace Tate
Steven A. Weiss
Susan Wisherd
Anonymous (3)

**SUPPORTER
\$250 - \$499**

Pamela G. Averick
Frances C. Barmann
Kathryn K. Brown
Majora J. Carter
Elizabeth Cherbonneau
Parvati & Mahesh Cohen
Fran DeAngelis
Karen M. Dorfman
Kim Duell
Elizabeth Fales
Vicki L. Fox
Jeffrey & Sheila Frank
Suzanne George
Lisa Dawn Goldstein

Health Communications, Inc./Jack Canfield, Mark Victor Hansen, Dorothy Firman, Julie Firman, Frances Firman Salorio
June Jackson
Robin L. Johnson
Susan and Michael Kerr
Rick A. & Midge Kinder
Lynda Leavitt
Jack Lehnert
Paula Lightkap
Joy Maniscalco
Denise Manos
Laura J. McWilliams
Bethany B. Menkart
Arthur Mitchell & Monica Yee-Mitchell
Debra L. Morrison
Michael J. Murphy
Ellen Deirde Murphy
Brian & Theta Pattison
Julie Perry
Wayne Reynolds
Jill Samo, Craig Lipman, Chelsea & Brielle Samo-Lipman
Don Shaw
Nancy & Philip S. Singleton
Brent Smerak
Ann Stenson
Frances Stewart
Steven J. Strumwasser Ph.D.
Jim & Dara Tomeo
Jenny Warburg
Nancy Weller, L.L.C.
Faith Whittington
Charles & Ashely Wile
I Love Yoga
David B. Green & Myrth York
Connie Zack
Anonymous (2)

**ASSOCIATE
\$125 - \$249**

Lee Benson
Martin Berger
Sheldon Blitstein
Jon Braverman
Roberta & Michael Brenner
Don & Ghazal Campbell

Charon Campbell
Mary Ellen Carroll
Dan Carroll
Helen Churko
Randy Colburn
Michael L. Collins
Donna Coombs
Francine Decicco
Sandra H. Dempsey
Patricia & Walter Dennison
Joe & Vicki Douglas
David Eisenberg
Deborah S. Freedman
Susan Goldstein-Steinhauser & Charles Steinhauser
Barbara S. Hancock
Ellen and Michael Handa
Susan Hanway Scott
George Hopper
Myla & Jon Kabat-Zinn
John and Lida Kaiser
David Kandel
Dr. Christine Ruth Keegan
William Klein
Mim Kohn
Patricia S. Larkin
Mary Lawrence
Phil & Susan Malloy
Judy Marsh & R. Kimball Leiser
Michal Mazur
Bill Naylor
Tom Nelson
Lorin Oberweger
Sarah B. Parsons
Jessica Patterson
Adriana & Steven Pavletic
Joy Principe
Frank Ridge
Teresa Rodriguez
Roberta Rogers
Claire Rosenzweig
Kathryn Sakas
Linda B. Selwood
Saskia Shakin
Katharine Spirtes
Karen K. Stabley
Ashara Stansfield
Volney J. Steffire
Rusty Stewart, Ph.D.
Ronald Subber
Martha W. Subber
Linda Sussman
Marianne S. Sutin
Juliette & Kurt C. Swartz

United EWay/Anonymous
Kevin Wadalavage
Elizabeth Waddell
Sarah Ann White
Carol A. Wood
Anonymous (4)

**MEMBER
\$75 - \$124**

Karen Achenbach
Russell Afflerbach
Anjenette Afridi
Marlene Alderman
Victoria Angela
Carolynn F. Anklam
R. & Rosalie Applebaum
Andrew Arthur
Stephen Ashby
Elie E. Aslan
Leila M. Assad
Paula D. Atkinson
Cynthia Bachman
Chris & Jackson Baeza
Lily Bafandi
Jordan Baker
Balanced Essence/
Barbara & Joseph Fasulo
Alex Bangs
Wendy Baum
Diann Baxley
Adam Baylus
Allan S. Bazzoli, M.D.
Judy G. Becker
Melanie Beckerman
Sherry Beers
Sylvia Beitscher
Kathleen M. & Jeffrey M. Bell
Meg Bennett
Minnie Berman
Monique Bernstein
Anita K. Bess
Diane Billerman
Monica Biondi
Charlene E. Bloedorn
Gwendolyn L. Boey
Elizabeth Boitnott
Catherine M. Bookey
Joanna Boretti
Dan Bork
Joy Boscove
Laurie C. Brewer
Sarah E. Brown
Leonard N. Brown

Joyce O. Brown
Sandra A. Brown
Candace R. Burkle
Ronald D. Butler in memory of Gayil Greene
Jill Buzan
Sean Byrne
Gary Cameron
Kim Campbell
Jennifer Caputo
Diana & Joseph Carrero
Julie A. Carter
Angelo Castello
Geraldine B. Chandler
Anne C. Kane & Jim Kelly
Star Charney
Walter J. Ciecok Jr, Ph.D.
Elizabeth A. Cieri
Carl J. Cipolone
Jeff Clausen & Rebeckah Austill-Clausen
Robert H. Cockram
Sharla Cole
Amy Connolly
Gale Constable
Dina Costa
Barbara G. Cox
Sue R. Crichton
Regina M. Cronin
Tony Currera
Julie Dalton
James Davendonis
Candice David
Anna May Davidson
Beth Davison
Christine Davison
Valerie Dearing
Rosemary Detrolino
Elizabeth Dewan
Diana Dial
Armand Diaz & Emilia Santo
Chandan DiGiurcio
Vernon & Mary Joyce Dixon
Nancy Dotlo
James & Joan Dunne
Marilyn Eanet
Carol Elfant
Suzanne F. Elliot
Greg Esmer
Rhoda Feinstein
Robert Fersh & Sharon Markus
M. Fineman
George D. Fish & Kathleen A. Sullivan

Alan C. Fitts
Josephine Poe Fitts
John J. Fitzpatrick
Vaughn Folkert
Mary Forbes Singer
Gloria Fox
Gayle A. Franceschetti
Bruce Freeman
Marvis Frenkel
Dominique Gaherty
Norman Galinsky
Walt & Hollie Galloway
Rosemary Gange
Betty B. Garrett
Bonnie Giebfried
Michelle Gilmer
Judith Giordano
Theresa Gladney
Eva M. Goikuria
Robert & Lorraine Stobbe Goldbloom
Aileen Gould
Frances & Stephen Grodzinsky
Dorsey & Karl Gude
Rachael Haas
Christel Haesicke
Daniel B. Hahn
Carol J. Hall
Leslie Hand
Jeff Harper
Diane M. Harris
Jeffrey Harris
Judy Harris
Christine Haviaris
Jane Hayes
Patricia Hecht & Glenn Petersen
Phyllis Heller
Ann E. Herington
Julia S. Heyman
Dottie Higgins
Alexandra F. Hill
Stan M. Hill
Mary N. Hitchcock
Jonathan S. Hoen
Delois Hollinger
Cheryllann V. Hollinger
Scott R. Hollinger
Linda Honker
Sue Howes
Holly Howes
Lee L. Hoyt
Katherine Hrabsky
Rita Hubert
Marylin Huff

Leslie Hughes
Sherry J. Hurwitz
Wendy Huttner
Frank Indelicato
Denise & Jeffrey Iorio
Elisabeth Isea
Ron Jacobs
Sandra L. Jacobson
Jamila Janco
Lola Janes
Mary Hammer Joachim & William Joachim
Donna Johnson
Gary F. & Nancy D. Johnson
Gene S. Jones
Rubi Jorgensen
Myra P. Joyce
Jerra Juliano
Seungwoo Jung
Deborah Kadagian
Sarah Kamrath
Susan Katz
Elizabeth Kearns
Kathleen Keegan
Amy Kimball
Cynthia Knapp Dlugosz
Jeanne Koenigsreuter
Michelle Koross
Sandra Lach Mesli
William R. Landes & Rani Isenberg
Shari Landsman & Doug Schmidt
Sharon Lazerson
Marcus Leaver
Benita Lehmann
Gail S. Levinson
Juliette Levy Pomann
Art Lukoff
Austin Lybrand
David M. Mann
James E. Markham
Jennifer Martin
Diane Mast
James Matlock
Lucinda Matte
Carol A. Mazuy
Diane-Ellen McCarron
Mari L. McCarthy
Lawrence R. McCarty
Earl McCurdy
Mary E. McCurdy
Kim E. McGinnis
Brownlee McKee

Kathy McVey
Jean Melnick
Janet Meyers
Jane H. Michaud
Laura Michelson
Corinne Miller
Elaine Miller
Francina Minors
Douglas Molin
Debbie Moran in honor of
Sister Alice and Fatty
Nancy & Hugh Murray
Yvette & Fayek Nakhla
Jacqueline Napoletano
Lisa Nasser
Michele Natale
David Nelms
Charles E. Nemeth
Paula Newcomer
Pamela A. & Alan Normandeau
Saul Nosanchuk
Maria M. Olivera
Akiko & Scott Oncken
Taur D. Orange
Sheila Owens
Helen Pariza
Ronn Parker, PH.D.
Tammy Parks
Cindy Parmley
Jennifer M. Pasternack
Mashelda Patterson
Donald Paulus
Andrew Payne
Lynn Perry
Maria Petrillo
Janice Pfund
DJ Pierce
Nina Piken Yarus
Kenneth Porter
Michelle M. Prosser
Steve Rakower & Suzanne Kai
Norman Reid
Margaret Reinold Gulino
Diane Renaud
Ann W. Rhineland
Judith Rifkin
Christy Roman
Gail Rosenberg
Sherri Rosenberg
Sheila Ross
Robert Rossi
Donna Rossi
Joan Z. Rough
Andrea Rudolph

Ann Rutledge &
Dan Hinckley
Frank and Devote Ryan
Arline Saturdayborn
Anita Schiavi
Rosemary Schultz
David M. Schwartz
Valerie Scruggs
Patricia Seidensticker &
Buzz Mallett
Suzanne Seltzer
Michael Shea
Sharon Shuteran
Kim & Bruce Silverman
Susan A. Silverman
Susan M. Silverman
Pami Singh
Rebecca F. Sinkler
Patricia L. Sinnott
Patricia Smith
Susan Smith
Holly G. Socolow
Carole Spackman
Catherine M. Spadoro
Stephanie Stanley
Sue Stasch
Marta Stemberger
Tamara Stern
Linda N. Stertz
Jacqueline Stitt
Susan Strassburger
William J. Strnad
Robert O. Strubel
Eva Stuglovics
Karen Susnitzky
Judith Swan
Celine Takatsuno
Anastasia Tanis Sherry A.
Tankersley
Ann Taylor
Hazel Tchernoff
Lisa Temoshok
Karen M. Terry
Mark Dresser & Lani Terry
Cyndi Thomas
Maureen Thompson
Pat Thompson
Margaret Tiano
Jana S. Tift
Carol Tokar
Stefanie Trice
Marie C. Trontell
Rose L. Turiello
Deborah Van De Grift

Elizabeth Vanarsdale
Margery Ventresca
Phyllis Versage
Deborah R. Vicharelli
Vivek & Sheh Vig
Shivali Viornery
Patricia Walker
Patricia W. Ward
Jac Watson
Daniel Weicher
Madelein Wentzel
Julie Whitmore
Christine T. Wilkinson
Etta Williams
Karen Williams
J.L. Wilson
Pat & Robert Wilson
Emma C. Wing
Janet Winn
Kelly Wolf
Micki C. Wolfson
Kathy Wooten
Elizabeth Yates
Rina Young
Anonymous (2)

CONTRIBUTOR \$35 - \$74

Robert Abel Jr., M.D.
Tori Abiad
June F. Alexandra
Bruce Alleborn
Susan Ames & Bob Ames
Oliva Audiffred
Katie Augustine
John & Barbara Barber
Erica A. Barnes
S. Lawrence Bencze
Bonnie S. Berk
Diane Berke
Suzanne & Ronald Bjick
Susan & Bruce Blum
Stephen Broder
Michael Buriani
Laura G. Cantor
Jo-Ann T. Garricarte
Sara Cass
John L. Clausen &
Frances Edwards
Allison Craig
Amy A. Cunningham
Elaine Daw
Anne M. Donato

Patrick Donley
Ira & Rosalie Dornstein
John Durland
Ruth Ehrenkranz-Strauss
Barbara T. Erickson
Carol Eriksen
E. Mebane Ewan
Ruth Ann Farley
Maggie & George Faunce
Amy Fisher
Steve Fondiller
Richard E. Foster &
Larry B. Decker
Phyllis & John Framel
David Gage & Cathy Bock
Christina Gardner
Marylin Ginsburg
Regina F. Gordon
Eleanor G. Hand
Lisa Hantout
Debbie Helck
Margaret Finch
Trish A. Hendrix
Catherine Hoodak & Todd Austin
Gil Howard
Pauline Ireland
Rochelle D. Jobs
Lynne & Brian Jones
Billie Karres Hall
Peter Kaufman
Sandi & Fred D. Khani
Kathleen Knight
Kathryn M. Landherr
Steven Lesser & Kathy Quinn
Diane B. Levitt
Kathleen Lewandowski
Kate S. Lewis
Jane Lindau
Barbara Lindsey
Rose & Charles Mandala
Susan F. McKay Bateson
Sidney McNairy
Leora Mechanic
Nancy U. Monro
Vincent Mullen
Bonnie Muller
Lucanne Musco
Gisele F. Nadeau
Deborah J. Nickerson
Vanessa F. Nunez
Nancy Osgood
Jane E. Petkofsky & Kevin Adams
Gerry Plunkett
Margaret Powers

Daisy Reese
Lizbeth M. Reilly
Deborah S. Roth
Susan Rupp
Laura Russello
Genevieve Ryder
Susan Serrano
Laurie B. Sherwood
Anna Simon
Sue K. & Steven S. Simring
Heidi Spitzer
Duke & Nancy Spitzer
Susan D. Stathoplos
Ruth Steinberg
Marilyn Stewart
Annette Szczesiul
Shawn M. Tassone
Sarah Tenney
Carl L. Turner
Lee Twyman
Laura A. Walters
PeaceJam/Jessica D. Ward
James C. Washburn
Scott Yeo
Tracy Young
Jill M. Zisman
Anonymous (7)

MATCHING GIFTS

The Freddie Mac Foundation (2)
Bank of America Foundation
First Data Corporation
Benjamin Moore & Co.

OMEGA LEGACY SOCIETY

Cindy & Hugh Beckman
Sherry Berman
Susan & Donald Block
Bill F. Karl & Diane M. Harris
Elaine & Hank Koelmel
R. Kimball Leiser & Judy Marsh
Betty Anne Schwane



Stephan Rechtschaffen, M.D.

Board Chairperson,
Omega Cofounder,
Entrepreneur

Elizabeth Lesser

Omega Cofounder,
Senior Advisor,
Writer

Gail Gross

(through July 2007)
Writer,
Family and Child
Development Specialist

Tom Kearns

(through April 2007)
Private Investor

Gary Krauthamer

President,
Krauthamer & Associates

Sheryl Lamb

Organic and
Sustainability Advocate

Walter Link

Chairperson of
The Global Academy
and Cochairperson of
Global Leadership
Network

David Orlinsky

Private Investor

Arman Simone

(through April 2007)
Retired Businessman

OMEGA

OMEGA

Omega Institute for Holistic Studies, Inc.

150 Lake Drive • Rhinebeck, New York 12572

eOmega.org • 845.266.4444

